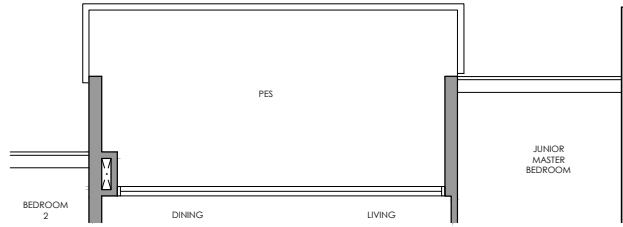
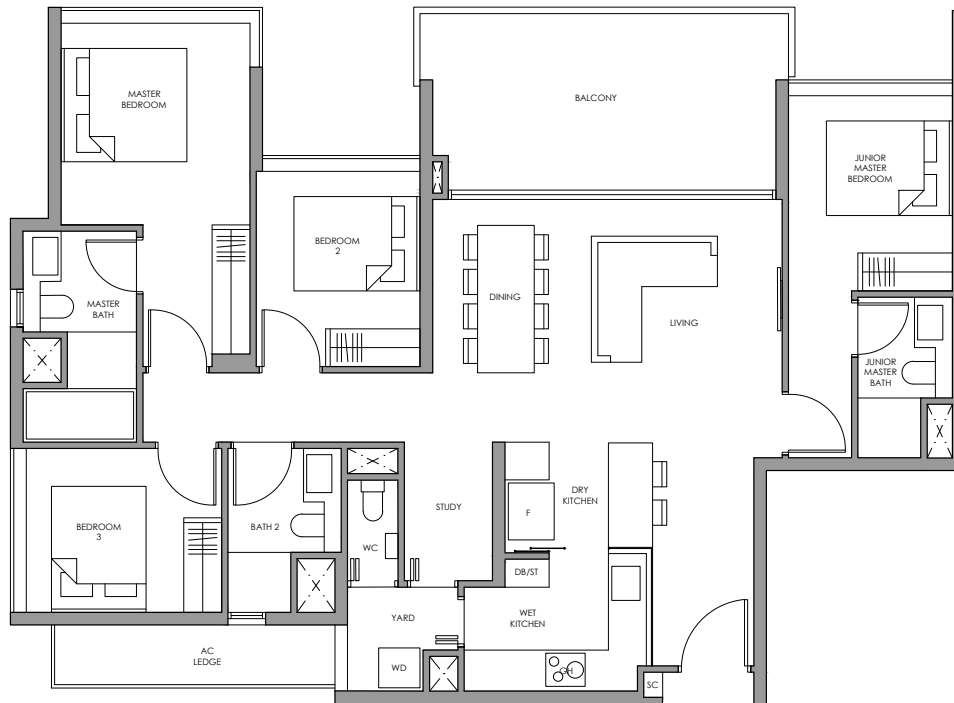


4-Bedroom + Study

Type DS1(p)



Type DS1



- | | |
|----------------------------|-------|
| Fridge | F |
| Gas Hob | GH |
| Shoe Cabinet | SC |
| Washer and Dryer | WD |
| Distribution Board / Store | DB/ST |



Type DS1(p)

137 sq m / 1475 sq ft
Inclusive of 17 sq m PES
& 5 sq m AC Ledge

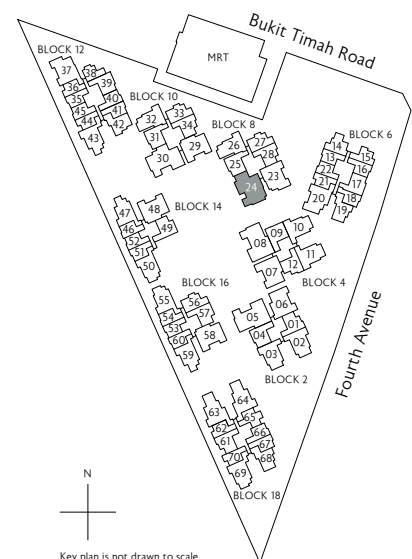
Block 8
#01-24



Type DS1

137 sq m / 1475 sq ft
Inclusive of 17 sq m Balcony
& 5 sq m AC Ledge

Block 8
#02-24 to #06-24



* Mirror Image ^ High Ceiling

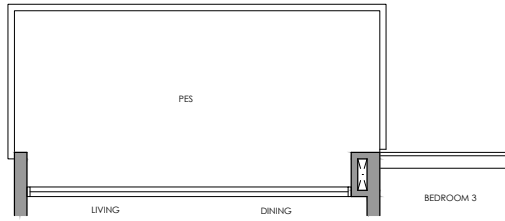


Key plan is not drawn to scale

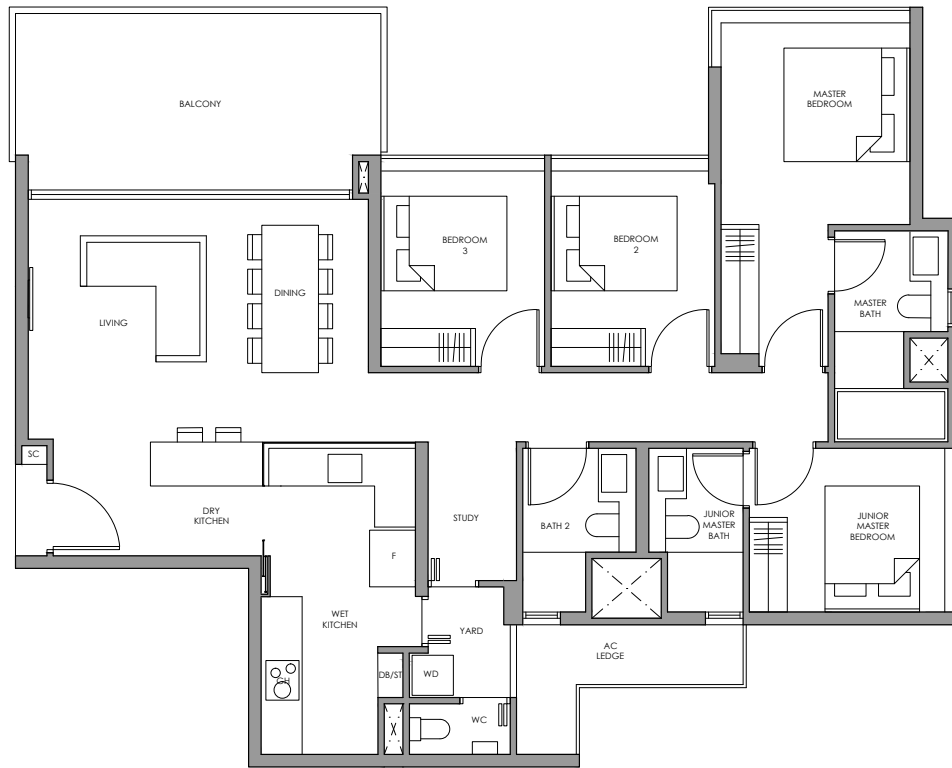
All plans are subject to change as may be required or approved by the relevant authorities. All floor areas are approximate measurements only and are subject to final survey. The balcony shall not be enclosed except with the approved balcony screen. For an illustration of the approved balcony screen, please refer to the diagram annexed hereto as "Annexure 1"

4-Bedroom + Study

Type DS2(p)



Type DS2



- | | |
|----------------------------|-------|
| Fridge | F |
| Gas Hob | GH |
| Shoe Cabinet | SC |
| Washer and Dryer | WD |
| Distribution Board / Store | DB/ST |



Type DS2(p)

139 sq m / 1496 sq ft
Inclusive of 17 sq m PES
& 5 sq m AC Ledge

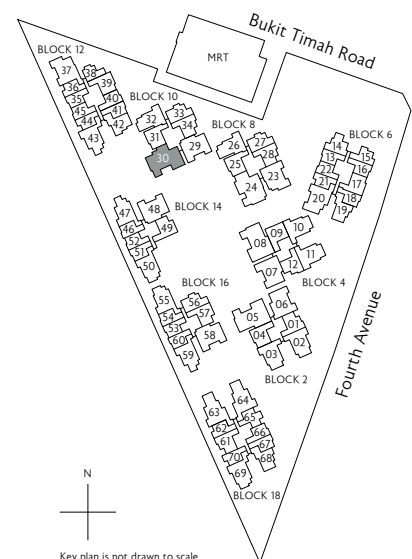
Block 10
#01-30



Type DS2

139 sq m / 1496 sq ft
Inclusive of 17 sq m Balcony
& 5 sq m AC Ledge

Block 10
#02-30 to #06-30



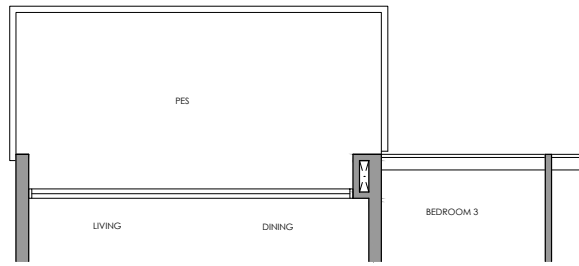
0 1 3 5M

* Mirror Image ^ High Ceiling

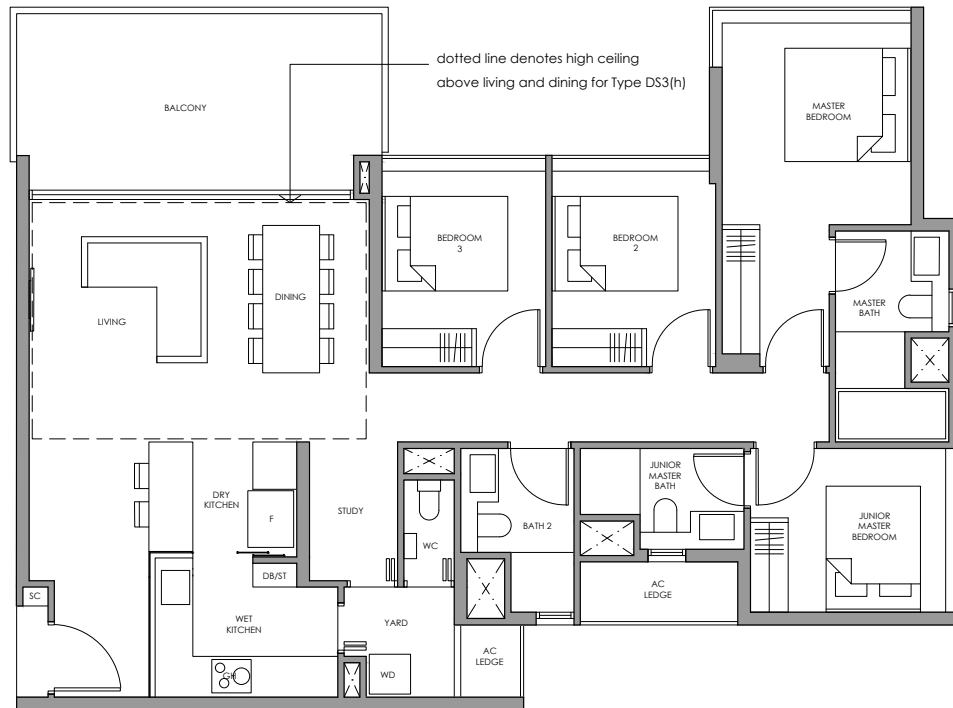
All plans are subject to change as may be required or approved by the relevant authorities. All floor areas are approximate measurements only and are subject to final survey. The balcony shall not be enclosed except with the approved balcony screen. For an illustration of the approved balcony screen, please refer to the diagram annexed hereto as "Annexure 1"

4-Bedroom + Study

Type DS3(p)



Type DS3
Type DS3(h)



- | | |
|----------------------------|-------|
| Fridge | F |
| Gas Hob | GH |
| Shoe Cabinet | SC |
| Washer and Dryer | WD |
| Distribution Board / Store | DB/ST |

✦
Type DS3(p)
 138 sq m / 1485 sq ft
 Inclusive of 17 sq m PES
 & 4 sq m AC Ledge

Block 2
 #01-05 *

Block 4
 #01-08

✦
Type DS3
 138 sq m / 1485 sq ft
 Inclusive of 17 sq m Balcony
 & 4 sq m AC Ledge

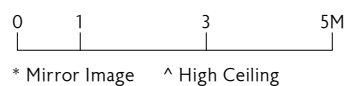
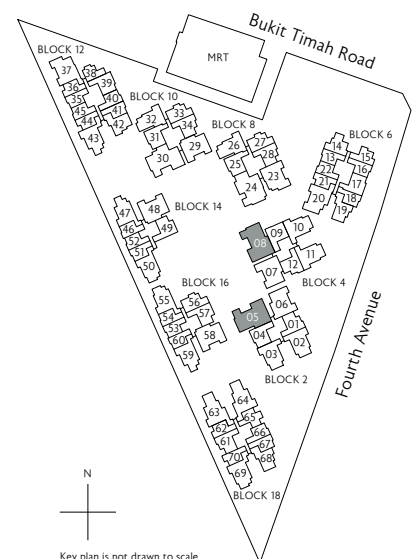
Block 2
 #02-05 to #05-05 *

Block 4
 #02-08 to #05-08

✦
Type DS3(h)
 138 sq m / 1485 sq ft
 Inclusive of 17 sq m Balcony
 & 4 sq m AC Ledge

Block 2
 #06-05 *

Block 4
 #06-08



All plans are subject to change as may be required or approved by the relevant authorities. All floor areas are approximate measurements only and are subject to final survey. The balcony shall not be enclosed except with the approved balcony screen. For an illustration of the approved balcony screen, please refer to the diagram annexed hereto as "Annexure 1"