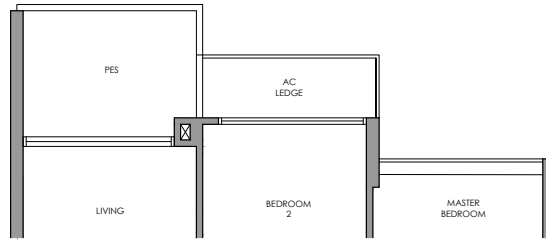
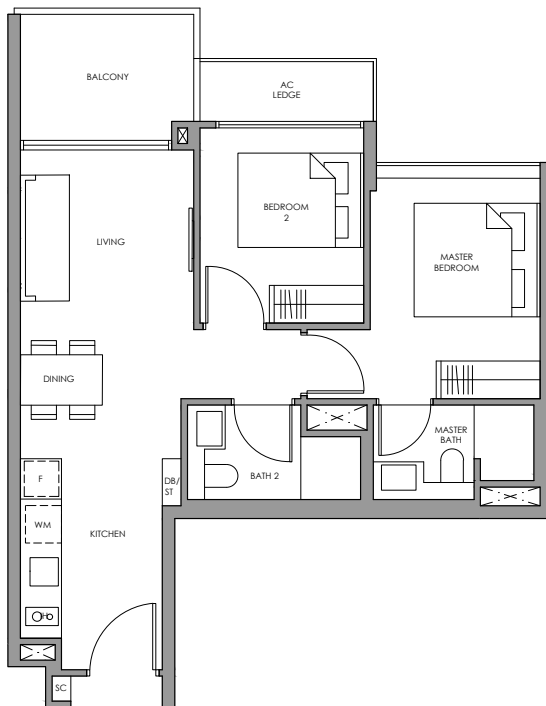


2-Bedroom Premium

Type BP1a(p)



Type BP1a



- | | |
|----------------------------|-------|
| Fridge | F |
| Gas Hob | GH |
| Shoe Cabinet | SC |
| Washer cum Dryer | WM |
| Distribution Board / Store | DB/ST |



Type BP1a(p)

64 sq m / 689 sq ft
Inclusive of 6 sq m PES
& 3 sq m AC Ledge

Block 8
#01-28

Block 10
#01-34



Type BP1a

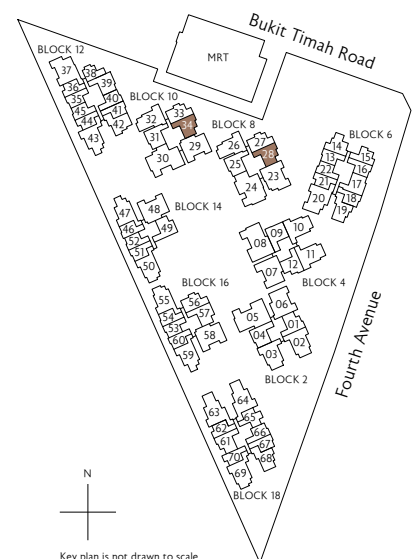
64 sq m / 689 sq ft
Inclusive of 6 sq m Balcony
& 3 sq m AC Ledge

Block 8
#02-28 to #10-28

Block 10
#02-34 to #10-34



* Mirror Image ^ High Ceiling

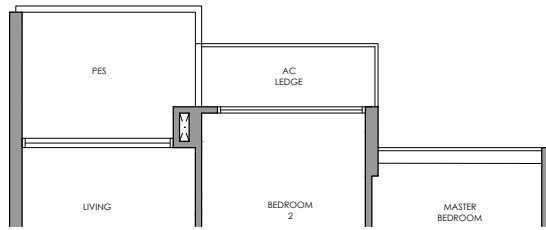


N
Key plan is not drawn to scale

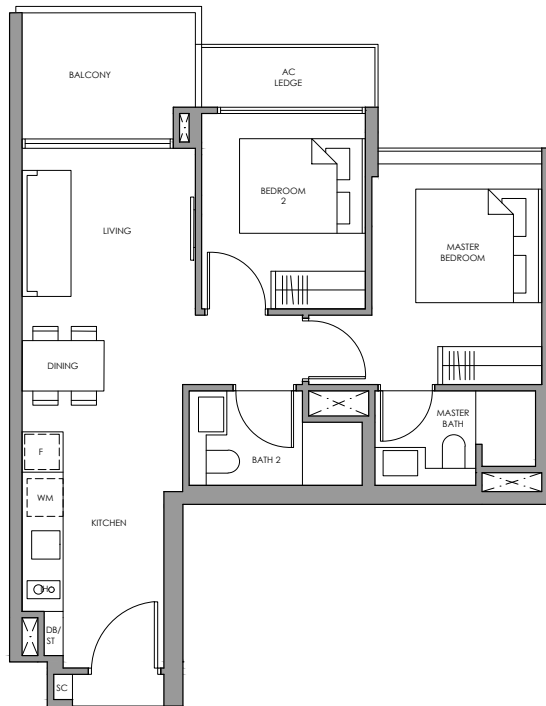
All plans are subject to change as may be required or approved by the relevant authorities. All floor areas are approximate measurements only and are subject to final survey. The balcony shall not be enclosed except with the approved balcony screen. For an illustration of the approved balcony screen, please refer to the diagram annexed hereto as "Annexure 1"

2-Bedroom Premium

Type BP1b(p)



Type BP1b



- | | |
|----------------------------|-------|
| Fridge | F |
| Gas Hob | GH |
| Shoe Cabinet | SC |
| Washer cum Dryer | WM |
| Distribution Board / Store | DB/ST |



Type BP1b(p)

64 sq m / 689 sq ft
Inclusive of 6 sq m PES
& 3 sq m AC Ledge

Block 2
#01-01 *

Block 4
#01-12

Block 18
#01-61 *



Type BP1b

64 sq m / 689 sq ft
Inclusive of 6 sq m Balcony
& 3 sq m AC Ledge

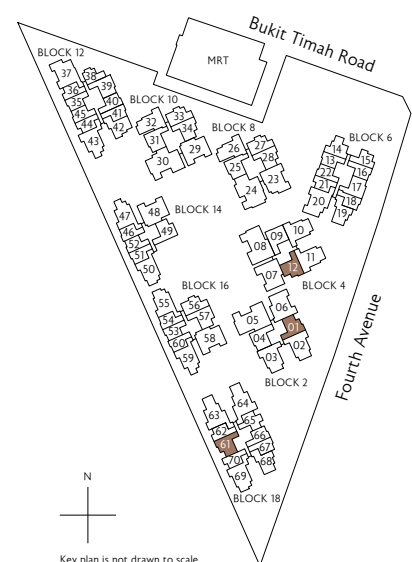
Block 2
#02-01 to #06-01 *

Block 4
#02-12 to #06-12

Block 18
#02-61 to #06-61 *



* Mirror Image ^ High Ceiling

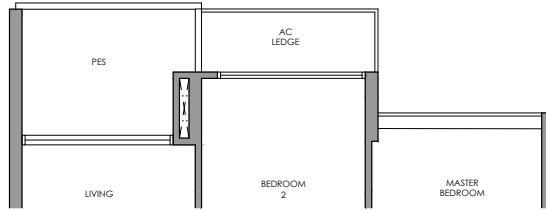


N
Key plan is not drawn to scale

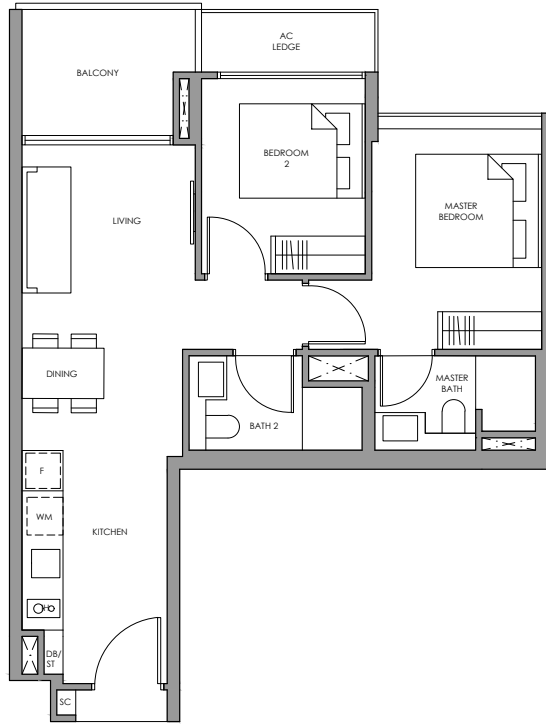
All plans are subject to change as may be required or approved by the relevant authorities. All floor areas are approximate measurements only and are subject to final survey. The balcony shall not be enclosed except with the approved balcony screen. For an illustration of the approved balcony screen, please refer to the diagram annexed hereto as "Annexure 1"

2-Bedroom Premium

Type BP1c(p)



Type BP1c



- | | |
|----------------------------|-------|
| Fridge | F |
| Gas Hob | GH |
| Shoe Cabinet | SC |
| Washer cum Dryer | WM |
| Distribution Board / Store | DB/ST |

Type BP1c(p)

65 sq m / 700 sq ft
Inclusive of 6 sq m PES
& 3 sq m AC Ledge

Block 14
#01-49 *

Block 16
#01-57

Type BP1c

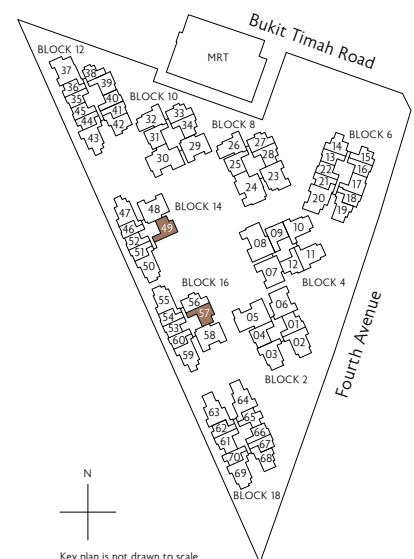
65 sq m / 700 sq ft
Inclusive of 6 sq m Balcony
& 3 sq m AC Ledge

Block 14
#02-49 *^

Block 16
#02-57 ^



* Mirror Image ^ High Ceiling

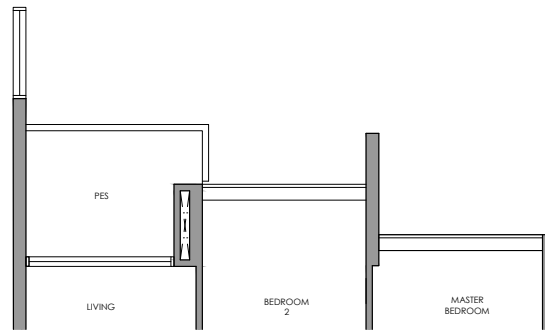


N
Key plan is not drawn to scale

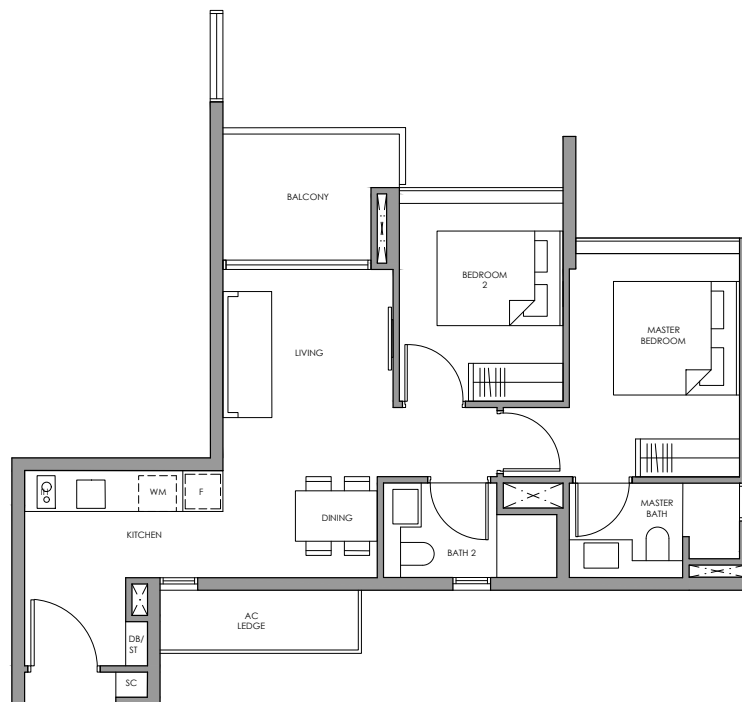
All plans are subject to change as may be required or approved by the relevant authorities. All floor areas are approximate measurements only and are subject to final survey. The balcony shall not be enclosed except with the approved balcony screen. For an illustration of the approved balcony screen, please refer to the diagram annexed hereto as "Annexure 1"

2-Bedroom Premium

Type BP2(p)



Type BP2



- | | |
|----------------------------|-------|
| Fridge | F |
| Gas Hob | GH |
| Shoe Cabinet | SC |
| Washer cum Dryer | WM |
| Distribution Board / Store | DB/ST |

✦
Type BP2(p)

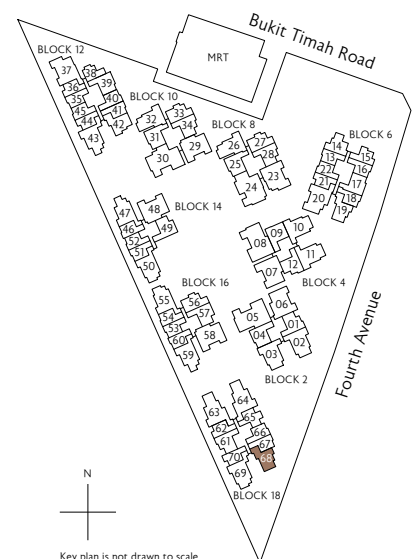
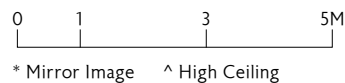
66 sq m / 710 sq ft
Inclusive of 6 sq m PES
& 4 sq m AC Ledge

Block 18
#01-68

✦
Type BP2

66 sq m / 710 sq ft
Inclusive of 6 sq m Balcony
& 4 sq m AC Ledge

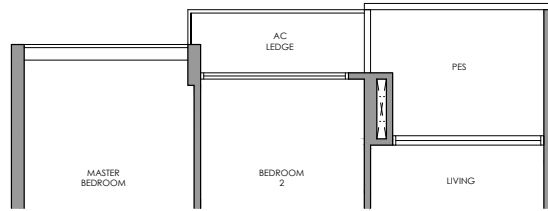
Block 18
#02-68 to #06-68



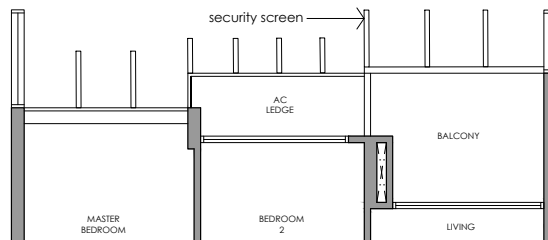
All plans are subject to change as may be required or approved by the relevant authorities. All floor areas are approximate measurements only and are subject to final survey. The balcony shall not be enclosed except with the approved balcony screen. For an illustration of the approved balcony screen, please refer to the diagram annexed hereto as "Annexure 1"

2-Bedroom Premium

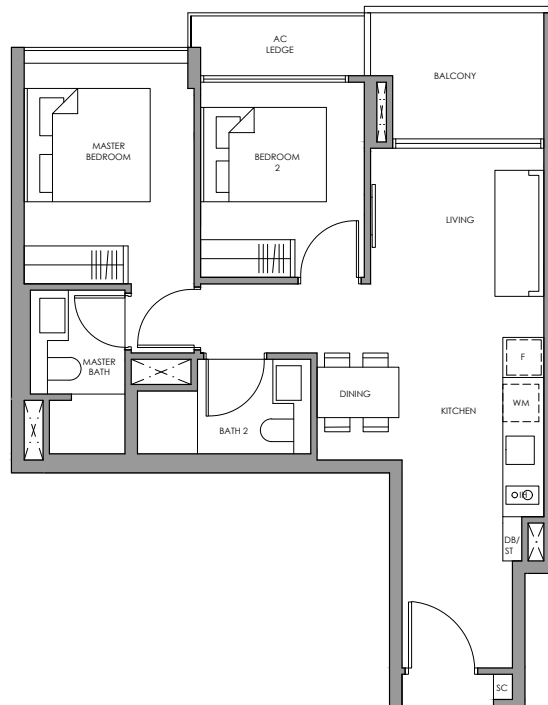
Type BP3a(p)



Type BP3a
WITH SECURITY SCREEN



Type BP3a



- | | |
|----------------------------|-------|
| Fridge | F |
| Gas Hob | GH |
| Shoe Cabinet | SC |
| Washer cum Dryer | WM |
| Distribution Board / Store | DB/ST |

Type BP3a(p)
66 sq m / 710 sq ft
Inclusive of 6 sq m PES
& 3 sq m AC Ledge

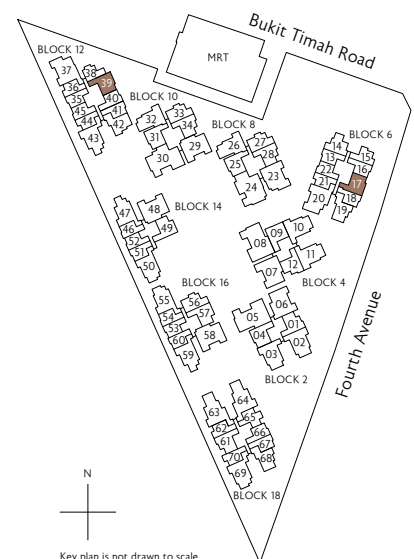
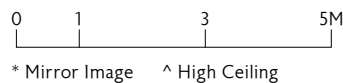
Block 6
#01-17

Block 12
#01-39 *

Type BP3a
66 sq m / 710 sq ft
Inclusive of 6 sq m Balcony
& 3 sq m AC Ledge

Block 6
#02-17 to #06-17
#07-17 to #10-17 (security screen)

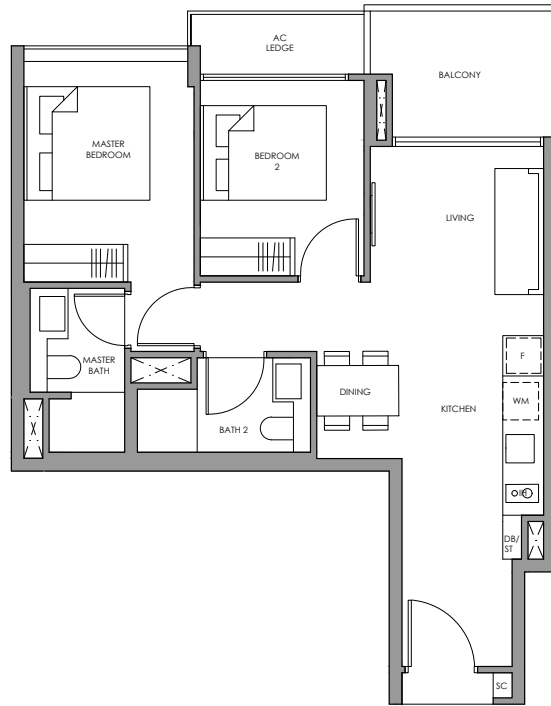
Block 12
#02-39 to #10-39 *



All plans are subject to change as may be required or approved by the relevant authorities. All floor areas are approximate measurements only and are subject to final survey. The balcony shall not be enclosed except with the approved balcony screen. For an illustration of the approved balcony screen, please refer to the diagram annexed hereto as "Annexure 1"

2-Bedroom Premium

Type BP3b



- | | |
|----------------------------|-------|
| Fridge | F |
| Gas Hob | GH |
| Shoe Cabinet | SC |
| Washer cum Dryer | WM |
| Distribution Board / Store | DB/ST |



Type BP3b

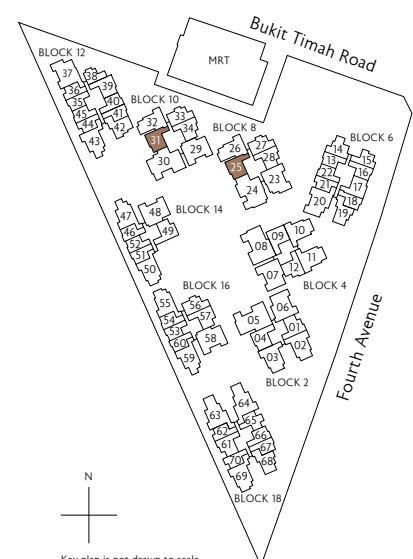
66 sq m / 710 sq ft
Inclusive of 6 sq m Balcony
& 3 sq m AC Ledge

Block 8
#02-25 to #10-25

Block 10
#02-31 to #10-31



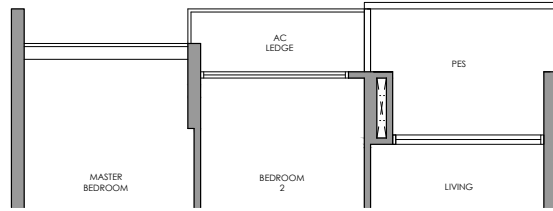
* Mirror Image ^ High Ceiling



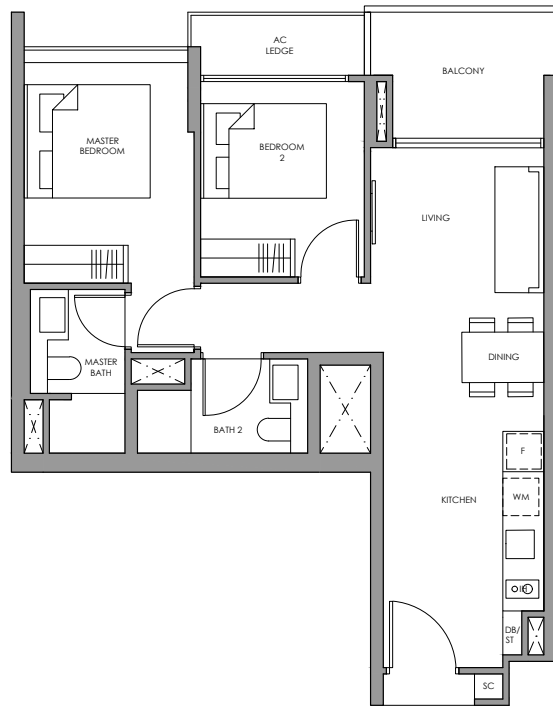
All plans are subject to change as may be required or approved by the relevant authorities. All floor areas are approximate measurements only and are subject to final survey. The balcony shall not be enclosed except with the approved balcony screen. For an illustration of the approved balcony screen, please refer to the diagram annexed hereto as "Annexure 1"

2-Bedroom Premium

Type BP4(p)



Type BP4



- | | |
|----------------------------|-------|
| Fridge | F |
| Gas Hob | GH |
| Shoe Cabinet | SC |
| Washer cum Dryer | WM |
| Distribution Board / Store | DB/ST |

Type BP4(p)

66 sq m / 710 sq ft
Inclusive of 6 sq m PES
& 3 sq m AC Ledge

Block 2
#01-04

Block 4
#01-09 *

Type BP4

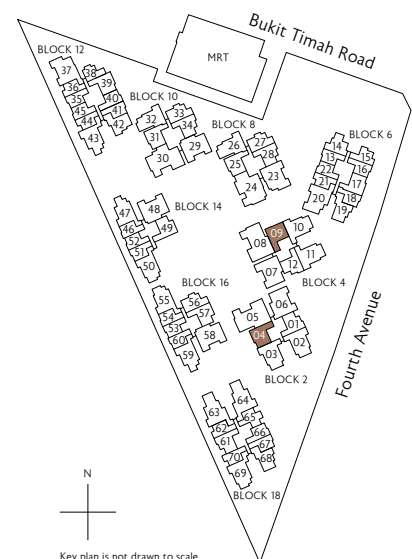
66 sq m / 710 sq ft
Inclusive of 6 sq m Balcony
& 3 sq m AC Ledge

Block 2
#02-04 to #06-04

Block 4
#02-09 to #06-09 *



* Mirror Image ^ High Ceiling

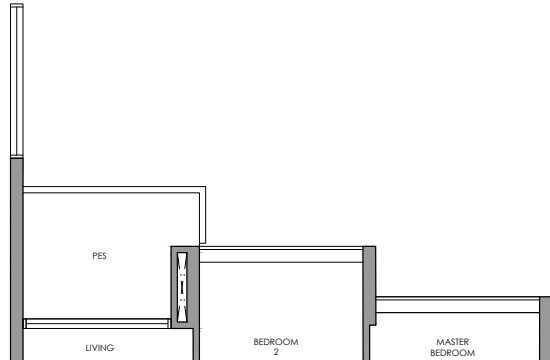


N
Key plan is not drawn to scale

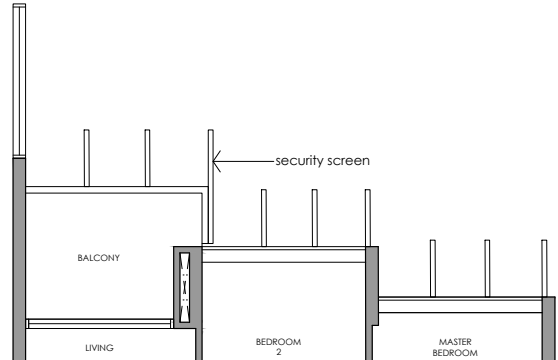
All plans are subject to change as may be required or approved by the relevant authorities. All floor areas are approximate measurements only and are subject to final survey. The balcony shall not be enclosed except with the approved balcony screen. For an illustration of the approved balcony screen, please refer to the diagram annexed hereto as "Annexure 1"

2-Bedroom Premium

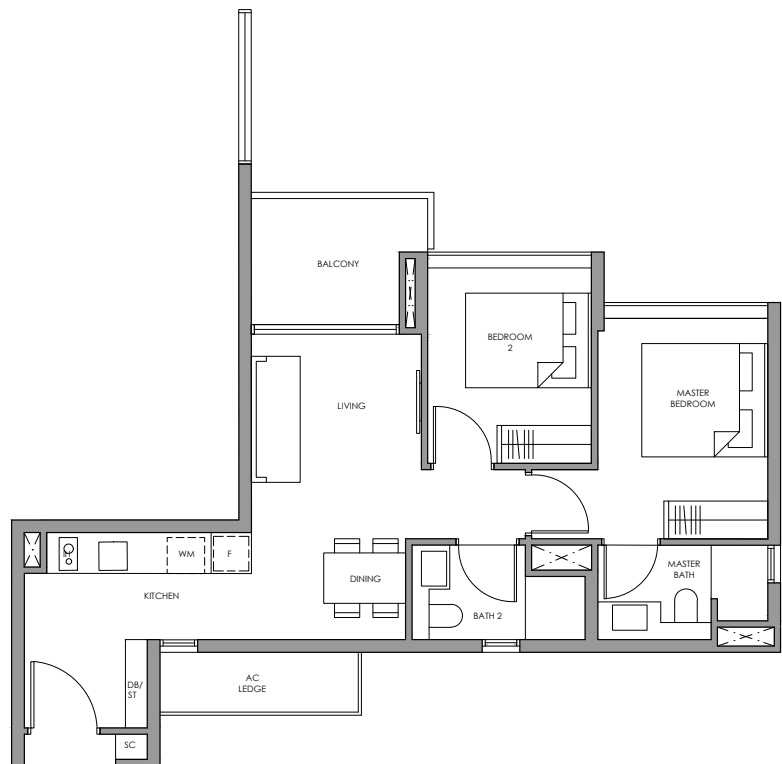
Type BP5(p)



Type BP5
WITH SECURITY SCREEN



Type BP5



- | | |
|----------------------------|-------|
| Fridge | F |
| Gas Hob | GH |
| Shoe Cabinet | SC |
| Washer cum Dryer | WM |
| Distribution Board / Store | DB/ST |

Type BP5(p)

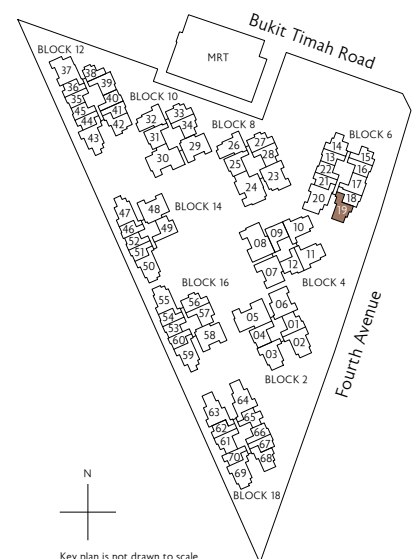
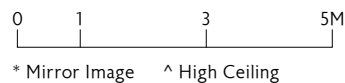
66 sq m / 710 sq ft
Inclusive of 6 sq m PES
& 4 sq m AC Ledge

Block 6
#01-19

Type BP5

66 sq m / 710 sq ft
Inclusive of 6 sq m Balcony
& 4 sq m AC Ledge

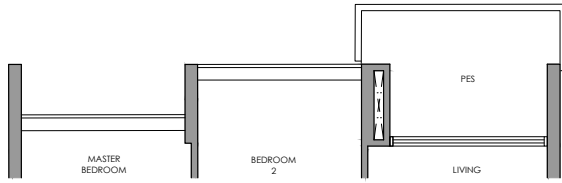
Block 6
#02-19 to #06-19
#07-19 to #10-19 (security screen)



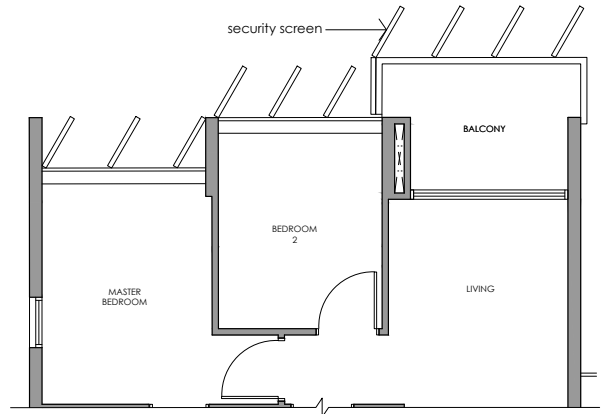
All plans are subject to change as may be required or approved by the relevant authorities. All floor areas are approximate measurements only and are subject to final survey. The balcony shall not be enclosed except with the approved balcony screen. For an illustration of the approved balcony screen, please refer to the diagram annexed hereto as "Annexure 1"

2-Bedroom Premium

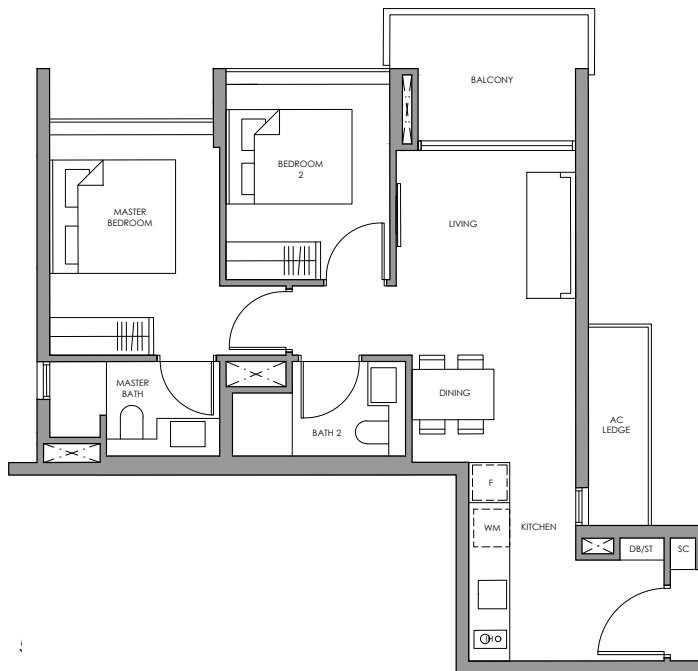
Type BP6(p)



Type BP6
WITH SECURITY SCREEN



Type BP6



- | | |
|----------------------------|-------|
| Fridge | F |
| Gas Hob | GH |
| Shoe Cabinet | SC |
| Washer cum Dryer | WM |
| Distribution Board / Store | DB/ST |

 Type BP6(p)

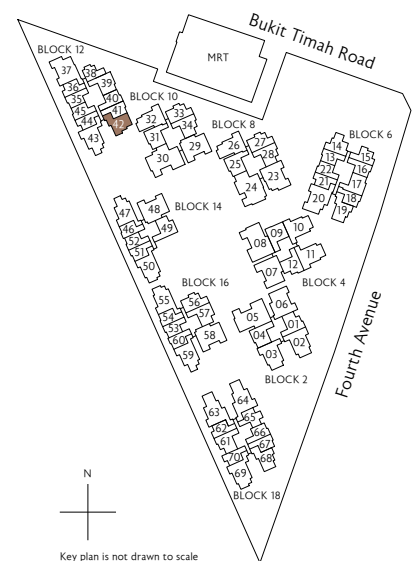
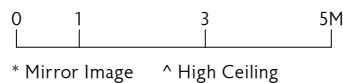
67 sq m / 721 sq ft
Inclusive of 6 sq m PES
& 4 sq m AC Ledge

Block 12
#01-42

 Type BP6

67 sq m / 721 sq ft
Inclusive of 6 sq m Balcony
& 4 sq m AC Ledge

Block 12
#02-42 to #07-42
#08-42 to #10-42 (security screen)



All plans are subject to change as may be required or approved by the relevant authorities. All floor areas are approximate measurements only and are subject to final survey. The balcony shall not be enclosed except with the approved balcony screen. For an illustration of the approved balcony screen, please refer to the diagram annexed hereto as "Annexure 1"