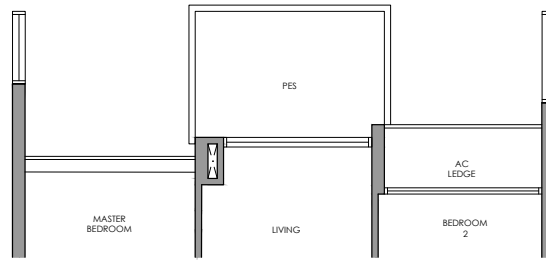
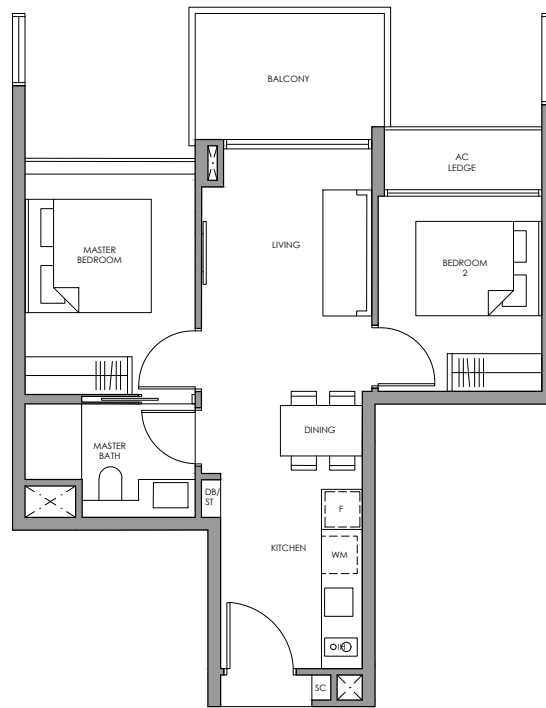


# 2-Bedroom

## Type B1(p)



## Type B1



- |                            |       |
|----------------------------|-------|
| Fridge                     | F     |
| Gas Hob                    | GH    |
| Shoe Cabinet               | SC    |
| Washer cum Dryer           | WM    |
| Distribution Board / Store | DB/ST |



### Type B1(p)

58 sq m / 624 sq ft  
Inclusive of 7 sq m PES  
& 3 sq m AC Ledge

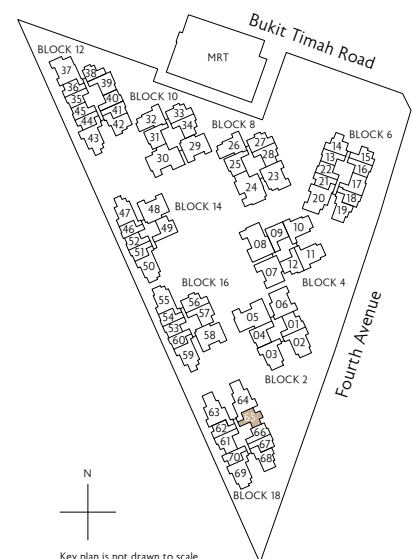
Block 18  
#01-65



### Type B1

58 sq m / 624 sq ft  
Inclusive of 7 sq m Balcony  
& 3 sq m AC Ledge

Block 18  
#02-65 to #06-65



\* Mirror Image ^ High Ceiling

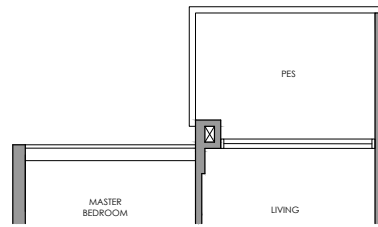


Key plan is not drawn to scale

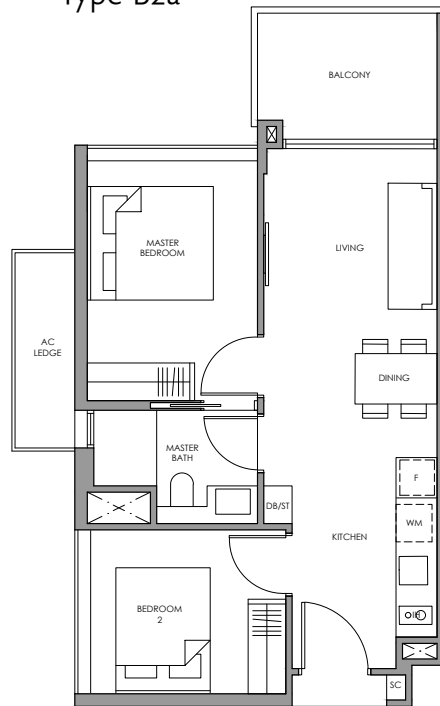
All plans are subject to change as may be required or approved by the relevant authorities. All floor areas are approximate measurements only and are subject to final survey. The balcony shall not be enclosed except with the approved balcony screen. For an illustration of the approved balcony screen, please refer to the diagram annexed hereto as "Annexure 1"

# 2-Bedroom

## Type B2a(p)



## Type B2a



- |                            |       |
|----------------------------|-------|
| Fridge                     | F     |
| Gas Hob                    | GH    |
| Shoe Cabinet               | SC    |
| Washer cum Dryer           | WM    |
| Distribution Board / Store | DB/ST |



### Type B2a(p)

60 sq m / 646 sq ft  
Inclusive of 6 sq m PES  
& 4 sq m AC Ledge

Block 8  
#01-27

Block 10  
#01-33

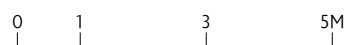


### Type B2a

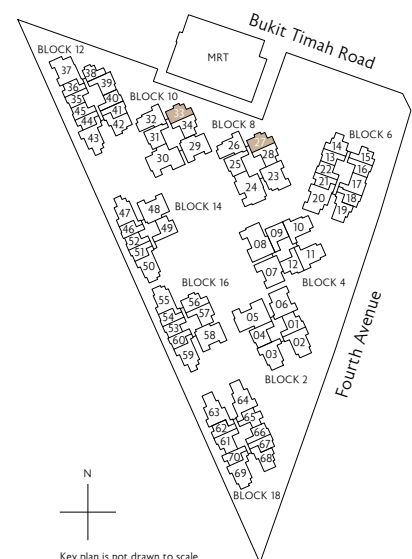
60 sq m / 646 sq ft  
Inclusive of 6 sq m Balcony  
& 4 sq m AC Ledge

Block 8  
#02-27 to #10-27

Block 10  
#02-33 to #10-33



\* Mirror Image ^ High Ceiling

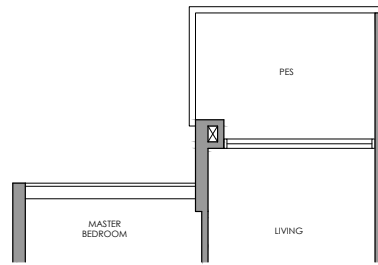


Key plan is not drawn to scale

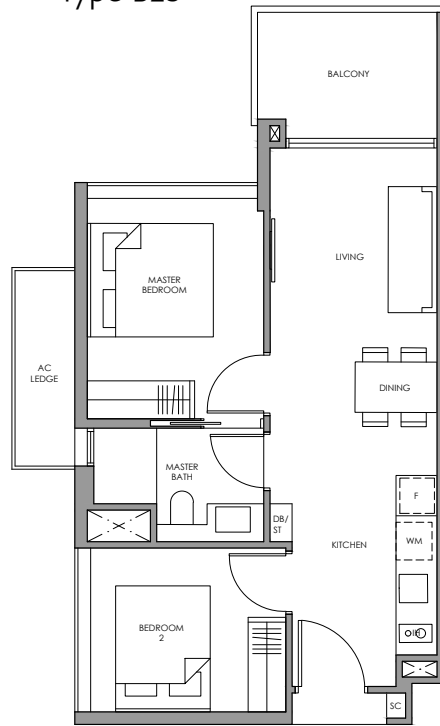
All plans are subject to change as may be required or approved by the relevant authorities. All floor areas are approximate measurements only and are subject to final survey. The balcony shall not be enclosed except with the approved balcony screen. For an illustration of the approved balcony screen, please refer to the diagram annexed hereto as "Annexure 1"

# 2-Bedroom

Type B2b(p)



Type B2b



- |                            |       |
|----------------------------|-------|
| Fridge                     | F     |
| Gas Hob                    | GH    |
| Shoe Cabinet               | SC    |
| Washer cum Dryer           | WM    |
| Distribution Board / Store | DB/ST |

 Type B2b(p)

60 sq m / 646 sq ft  
Inclusive of 6 sq m PES  
& 4 sq m AC Ledge

Block 16  
#01-56

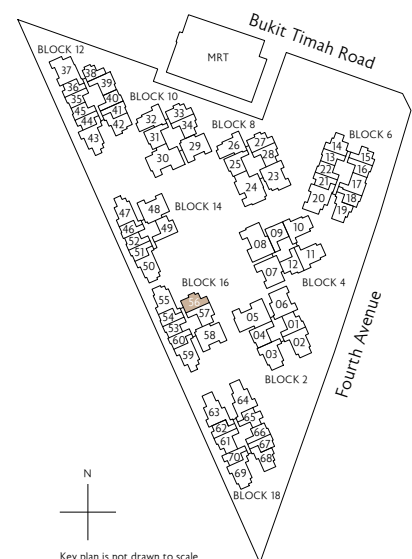
 Type B2b

60 sq m / 646 sq ft  
Inclusive of 6 sq m Balcony  
& 4 sq m AC Ledge

Block 16  
#02-56 ^



\* Mirror Image ^ High Ceiling

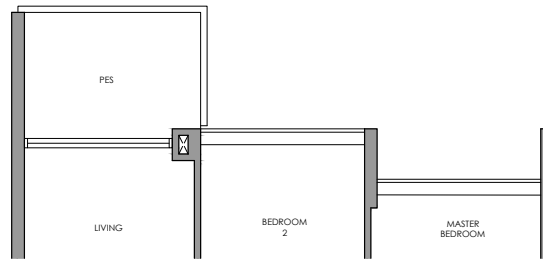


N  
Key plan is not drawn to scale

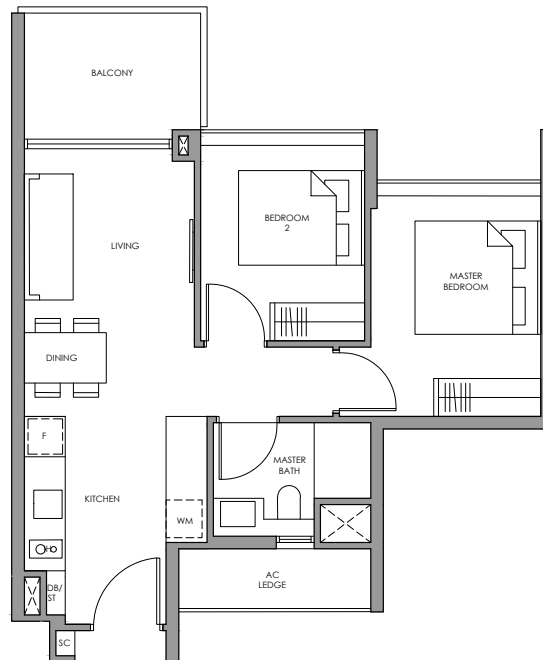
All plans are subject to change as may be required or approved by the relevant authorities. All floor areas are approximate measurements only and are subject to final survey. The balcony shall not be enclosed except with the approved balcony screen. For an illustration of the approved balcony screen, please refer to the diagram annexed hereto as "Annexure 1"

# 2-Bedroom

## Type B3(p)



## Type B3



- |                            |       |
|----------------------------|-------|
| Fridge                     | F     |
| Gas Hob                    | GH    |
| Shoe Cabinet               | SC    |
| Washer cum Dryer           | WM    |
| Distribution Board / Store | DB/ST |



### Type B3(p)

60 sq m / 646 sq ft  
Inclusive of 6 sq m PES  
& 4 sq m AC Ledge

Block 6  
#01-14



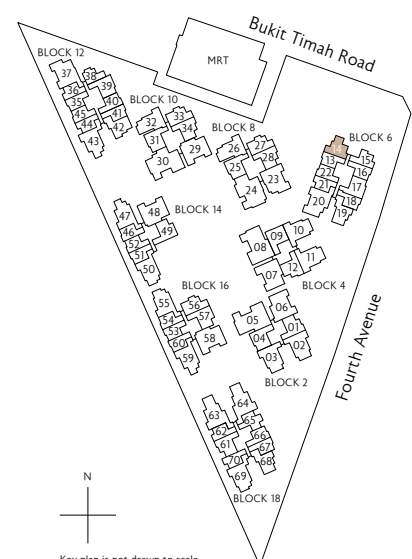
### Type B3

60 sq m / 646 sq ft  
Inclusive of 6 sq m Balcony  
& 4 sq m AC Ledge

Block 6  
#02-14 to #10-14



\* Mirror Image ^ High Ceiling



Key plan is not drawn to scale

All plans are subject to change as may be required or approved by the relevant authorities. All floor areas are approximate measurements only and are subject to final survey. The balcony shall not be enclosed except with the approved balcony screen. For an illustration of the approved balcony screen, please refer to the diagram annexed hereto as "Annexure 1"